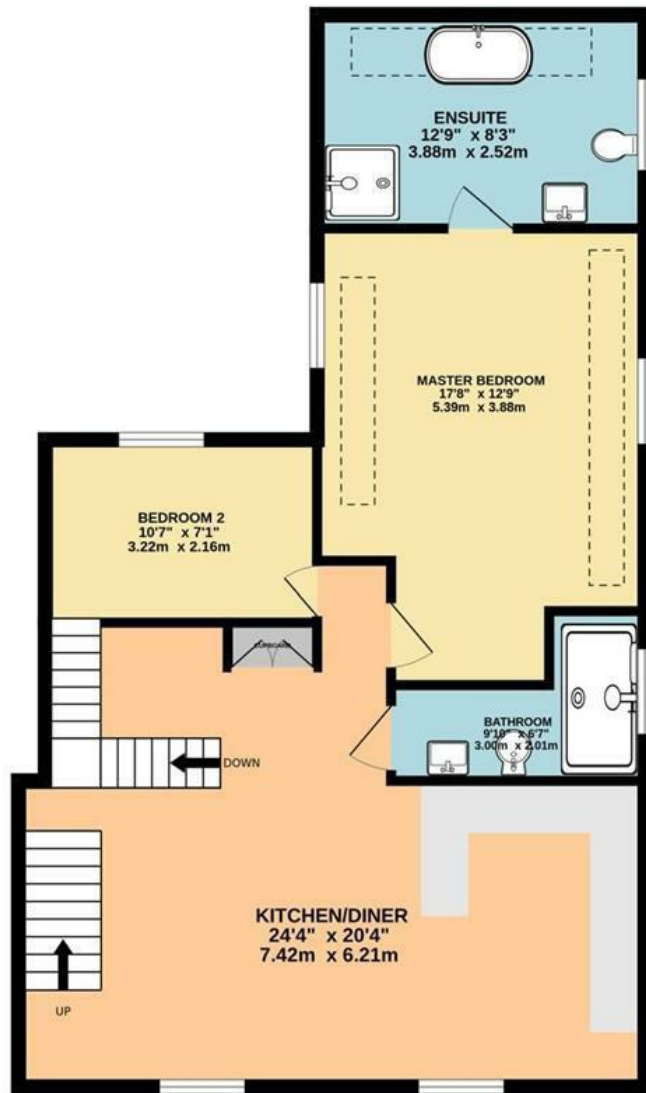


2ND FLOOR
850 sq.ft. (79.0 sq.m.) approx.

TOP FLOOR
171 sq.ft. (15.9 sq.m.) approx.



TOTAL FLOOR AREA: 1021 sq.ft. (94.9 sq.m.) approx.
Whilst every attempt has been made to ensure the accuracy of the floorplan contained here, measurements of doors, windows, rooms and any other items are approximate and no responsibility is taken for any error, omission or mis-statement. This plan is for illustrative purposes only and should be used as such by any prospective purchaser. The services, systems and appliances shown have not been tested and no guarantee as to their operability or efficiency can be given.
Made with Metropix ©2025



The Ridgeway, NW11

A stunning brand new top floor flat finished to an exceptional high specification throughout, offering 1027 sq ft of contemporary living space. Ideally located in the heart of Golders Green, just minutes from the High Street and Underground Station, the property combines luxury living with superb convenience.

The flat comprises three spacious bedrooms and three luxurious bathrooms, complemented by air conditioning throughout for year-round comfort

Available now.

£980 Per Week



RENTALS 020 8209 1144
SALES 020 8458 7311
FAX 020 8209 0307

E rentals@glentree.com
E sales@glentree.com
W www.glentree.com

Glentree Estates Ltd
698 Finchley Road
London NW11 7NE

